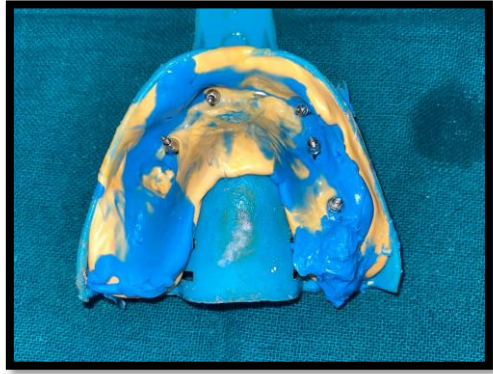
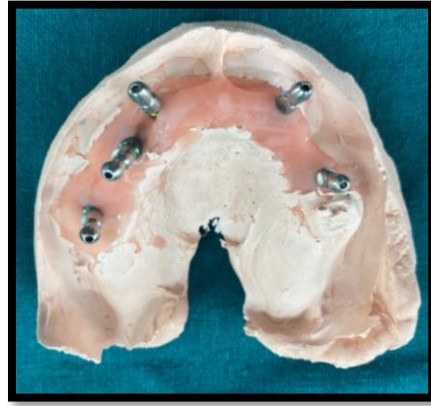


CASE 4- Case of malposed implants



Open tray impression made



Unfavorable position of implants as seen in the cast which was poured (gum pad used to mimic gingiva)



Jaw relation done



Custom abutments



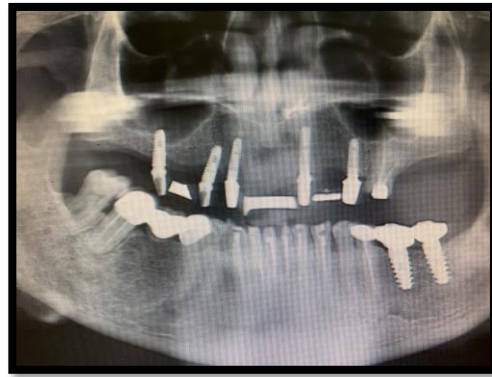
Jig trial (pattern resin)



Abutments placed over implants



Jig trial verified



OPG showing seating of abutments



Try in done



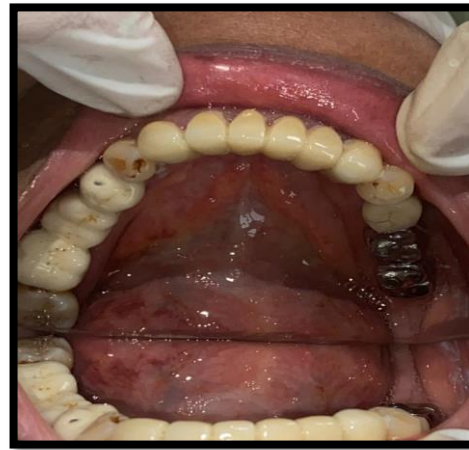
Metal trial



Porcelain fused to metal
framework cemented



Lower anteriors prepared



All ceramic crowns wrt to lower anteriors cemented



Final upper and lower prosthesis in place



Post operative frontal photograph